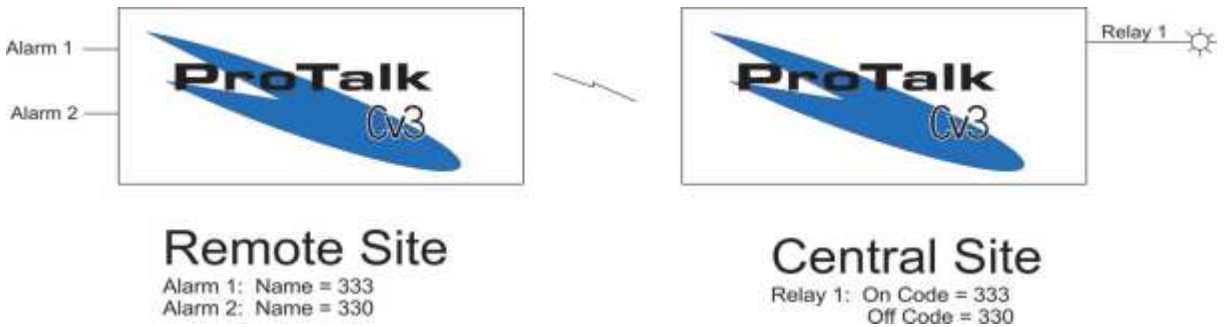


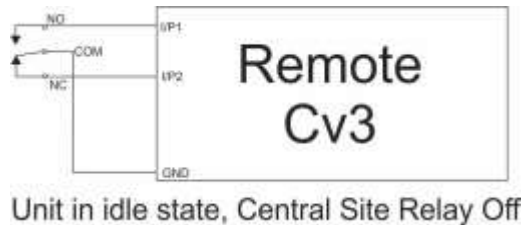
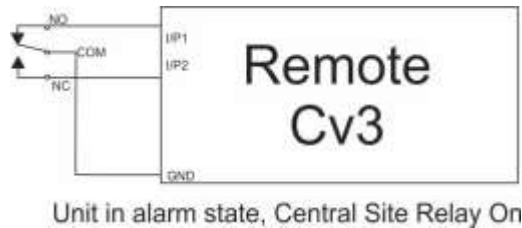
In this system application, a ProTalk Cv3 is used to report alarms from a remote location by turning the lamp of an annunciator panel on and off.

The diagram below shows a system where a remote site sends SMS text messages to a central site. The Alarm One name associated with the remote site input is the same as the Relay ON code at the central site. Similarly, the Alarm Two name at the remote location is the same as the Relay Off code at the central site.



Wiring:

Wire a Form C contact for the remote unit according to the diagram below:



Operation:

At first power-up with no alarm condition present, the Remote Input 2 will alarm. It will send an SMS text to the Central Site with a Relay OFF code. Once the Central Site has responded, the Remote Site alarm will acknowledge and the unit will be idle until an alarm occurs.

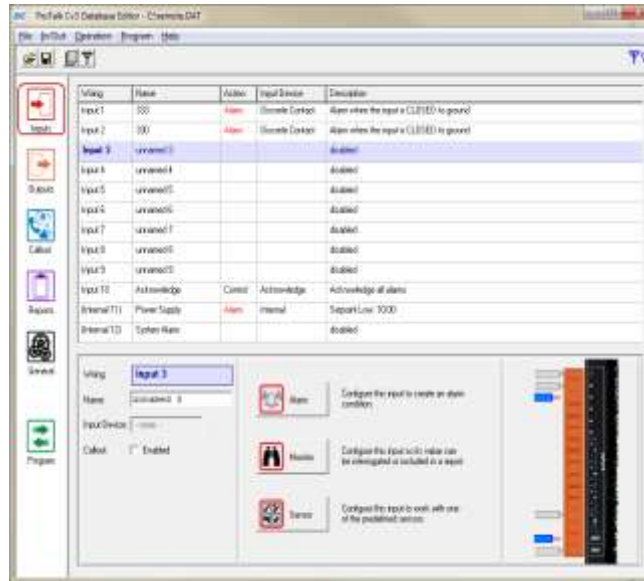
On an alarm, the Remote Input 2 will clear and Input 1 will alarm. This will send an SMS text to the Central Site with a Relay ON code. The Central Site Relay 1 will turn ON, and then respond to the Remote Site with an ACK code. Alarm 1 on the Remote Site will be illuminated and acknowledged, and as a mirror, the Central Site Output 1 will be ON. This condition will continue until the Remote Site Input 1 alarm clears.

Programming:

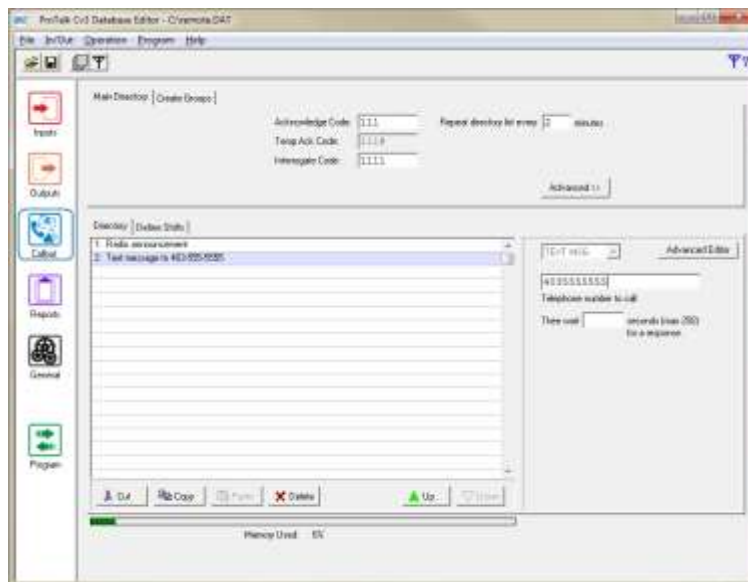
To configure the Remote Site, enable Input 1 and assign the name to be the Relay ON code for the Central Site. Enable input 2 and assign the name to be the Relay OFF code for the Central Site. In this example:

Relay ON code: 333

Relay OFF code: 330



Next, configure the Callout of the Remote Site Cv3 to text the Central Site phone number when an alarm condition occurs.



The Remote Site Cv3 is now configured. Write the configuration to the Remote Site Cv3.

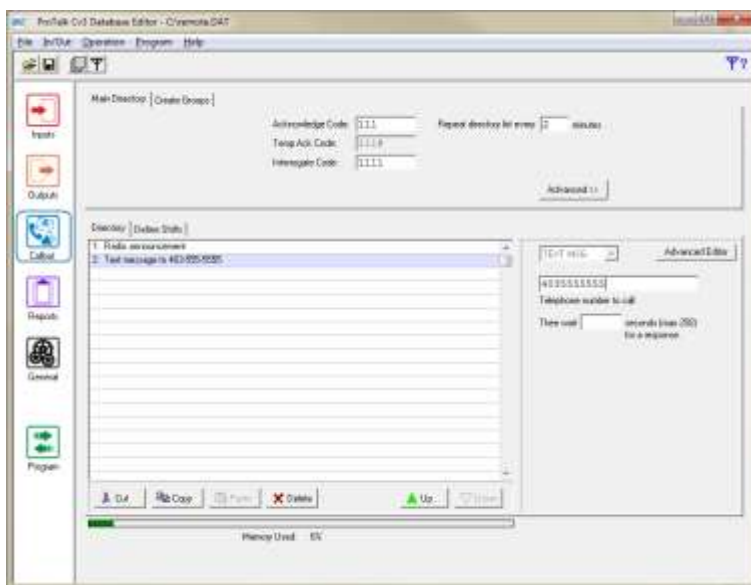
To program the Central Site, start a new database instance by selecting File -> New Database.
Change Output 1 to match the following settings:

Function: On/Off

Name: 111 (Remote Site Cv3 ACK code)

On Code: 333 (Remote Site Input 1 name)

Off Code: 330 (Remote Site Input 2 name)



Save this configuration as Central Site.dat and write it to the Central Site Cv3.

