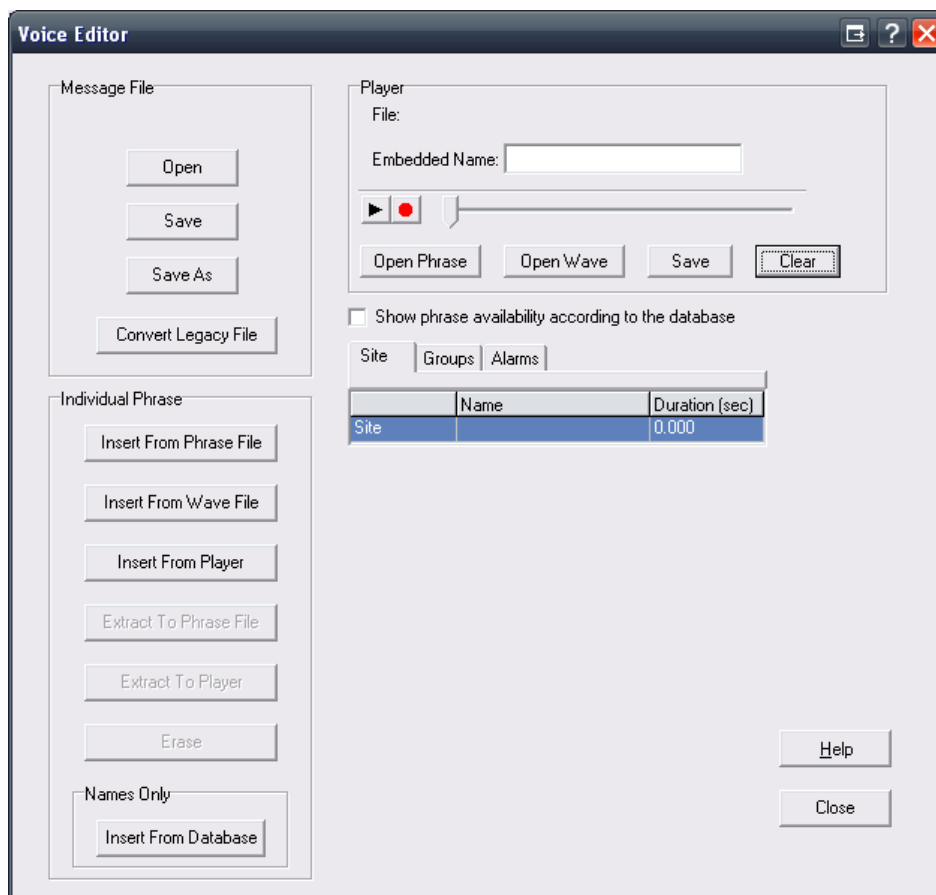


ProTalk Link

SPX/FLX Voice Conversion Tutorial

The ProTalk Link SPX/FLX Voice Conversion Tutorial will walk you through the steps necessary to convert existing SPX or FLX .msg files into a suitable Link .msg file.

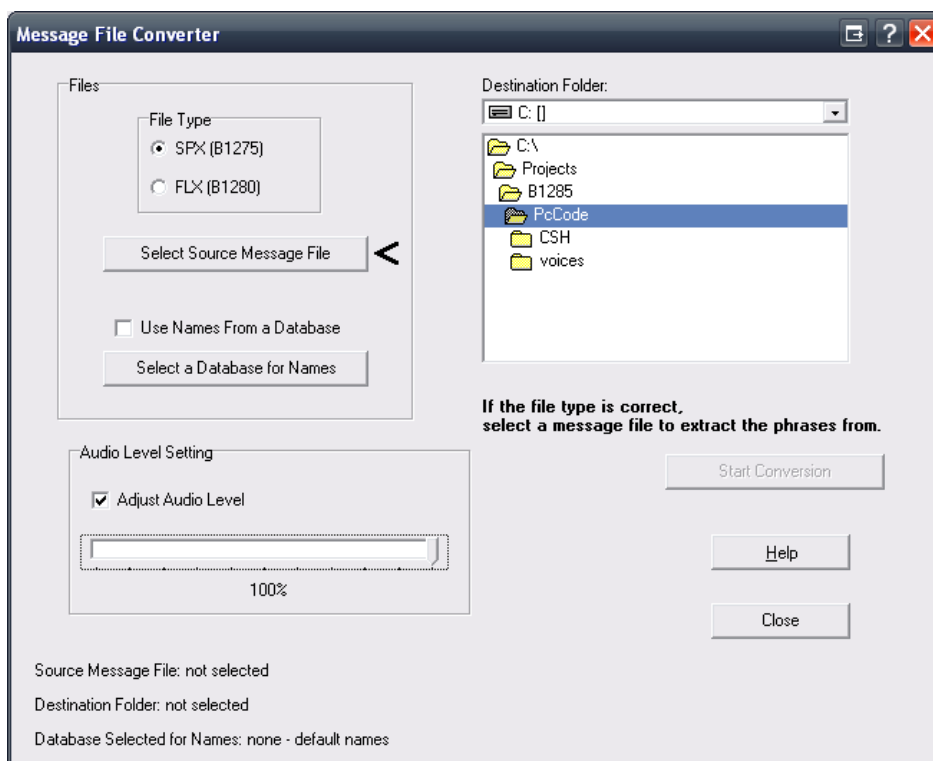
Launch the ProTalk Link Database Editor and select File → Voice Editor:



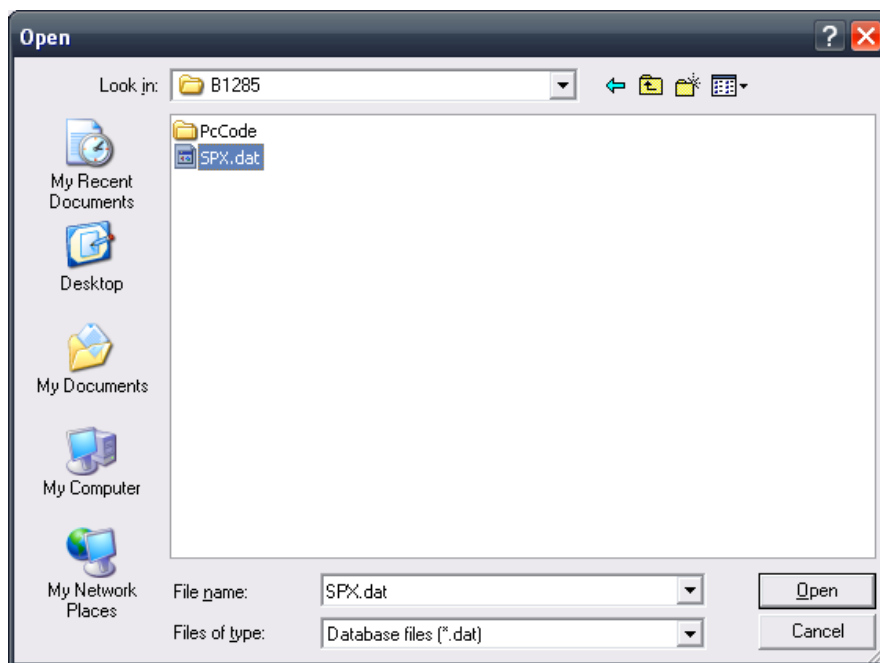
ProTalk Link

SPX/FLX Voice Conversion Tutorial

Press the 'Convert Legacy File' button:



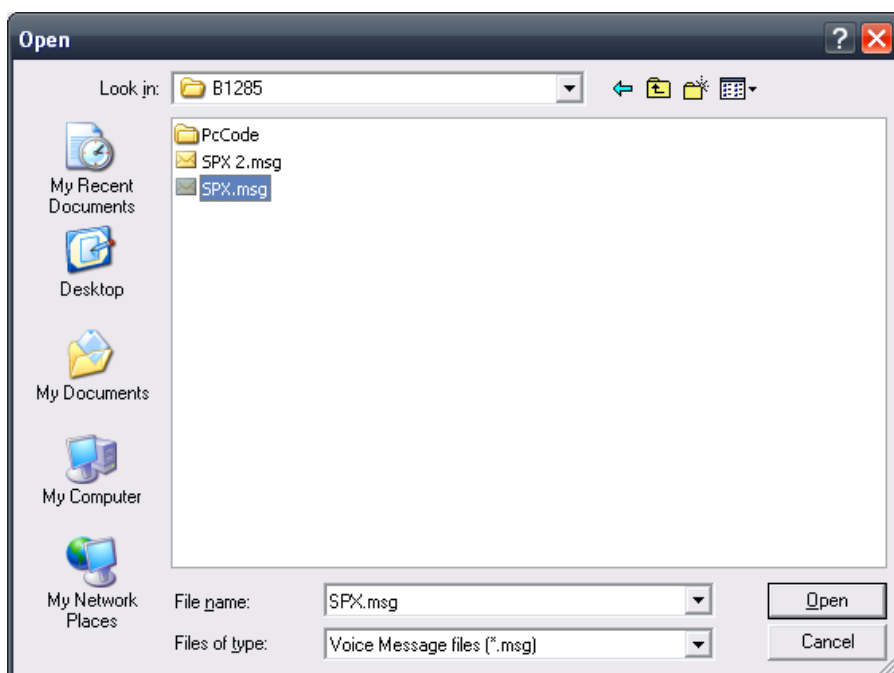
Check the 'Use Names From a Database' box, press the 'Select Database for Names' button and open the SPX .dat file that corresponds to the .msg voice file:



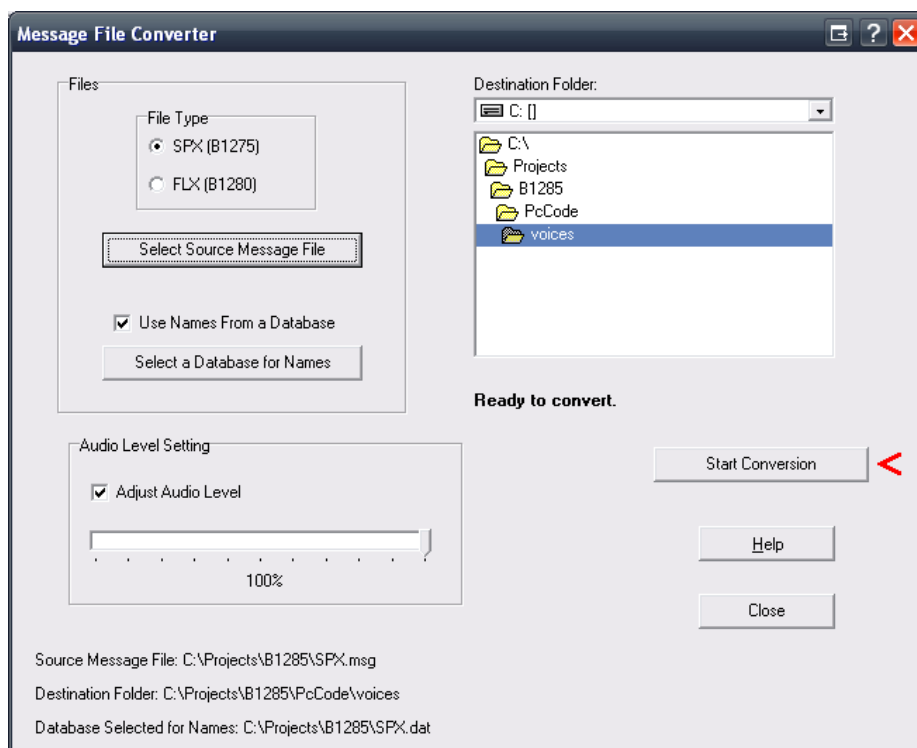
ProTalk Link

SPX/FLX Voice Conversion Tutorial

Select the File Type (SPX in this example) in the upper left-hand-side of the window, press the ‘Select Source Message File’ button and open the .msg file:



In the upper right-hand-side of the window, select the destination folder and press the ‘Start Conversion’ button:



A ‘Confirm’ window appears:

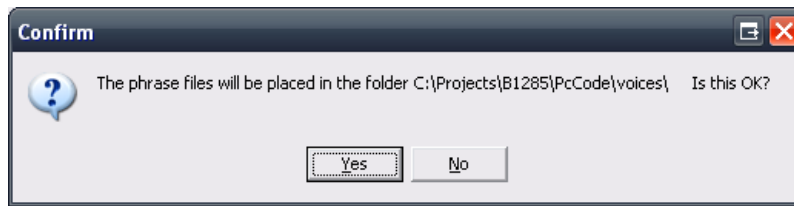


ProTalk - a division of Circa Enterprises Inc.
#200, 550 - 71st Avenue SE
Calgary, Alberta
T2H 0S6

PHONE:(403) 255-9544
TOLL: (800) 268-2646
www.barnettprotalk.com

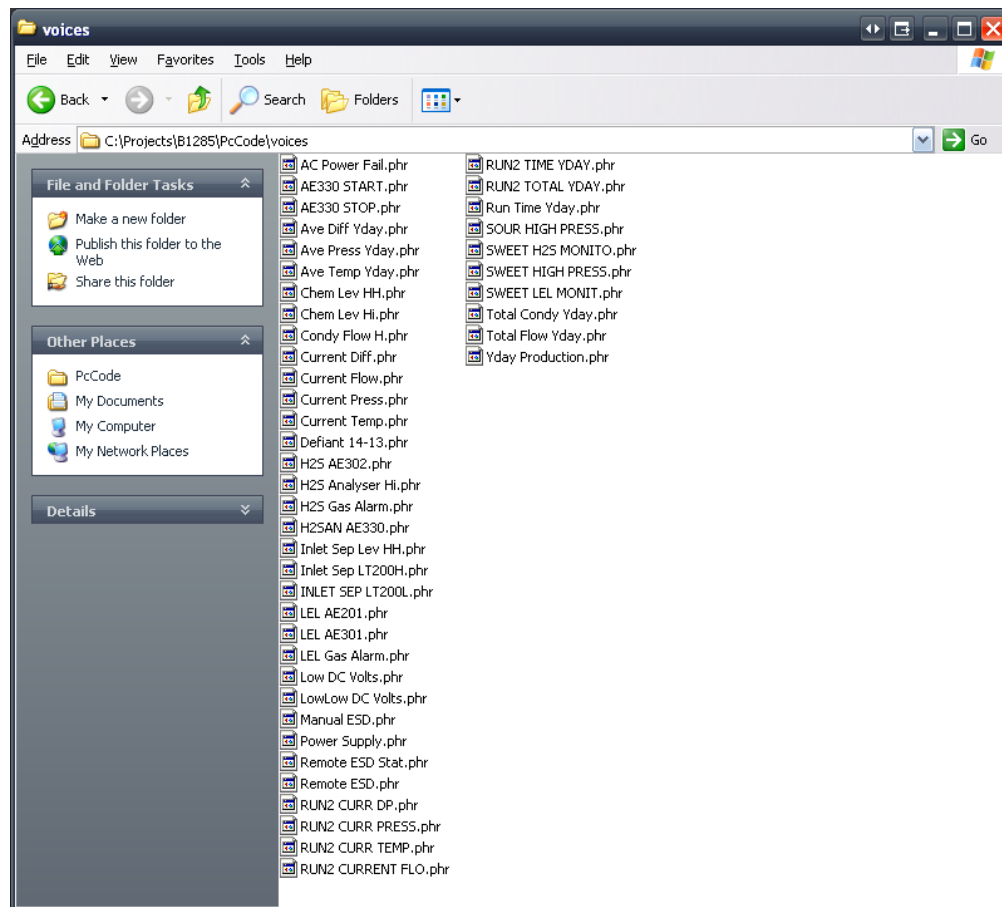
ProTalk Link

SPX/FLX Voice Conversion Tutorial



Press 'Yes' if the location is correct.

Close the Message File Converter window and open the folder where the converted voices are located:



The .phr voice files now match the names created in the original SPX database.

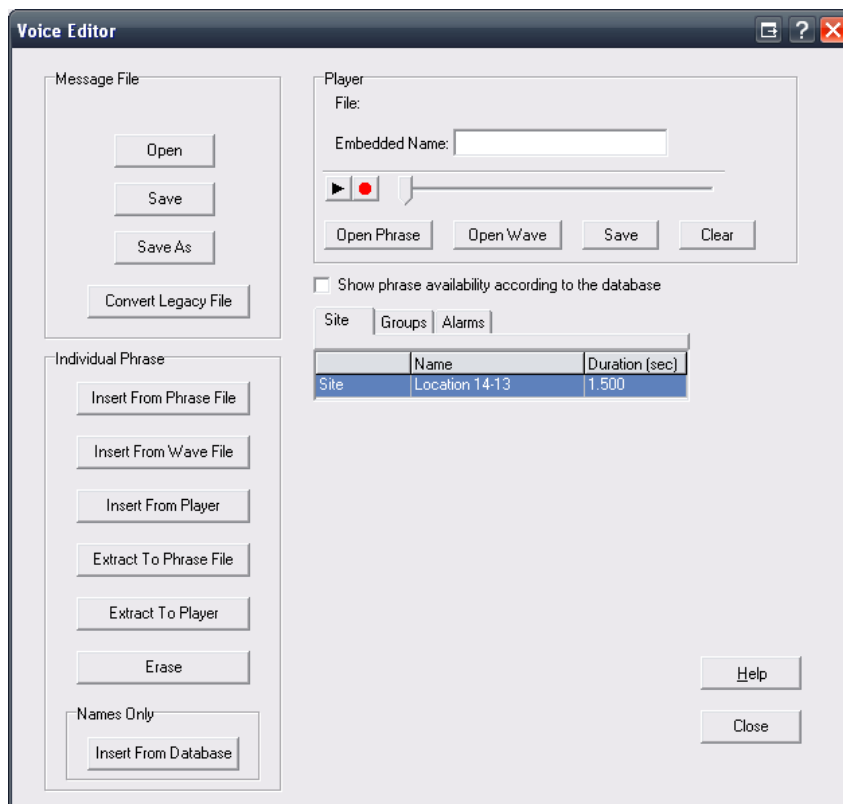
To create the Link .msg file from these voices, the .phr files need to be inserted into the Voice Editor.

Open the Voice Editor again.

ProTalk Link

SPX/FLX Voice Conversion Tutorial

The Site field is selected by default. Under the 'Individual Phrase' heading, press 'Insert From Phrase File' and select the appropriate .phr file (Location 14-13 in this example):

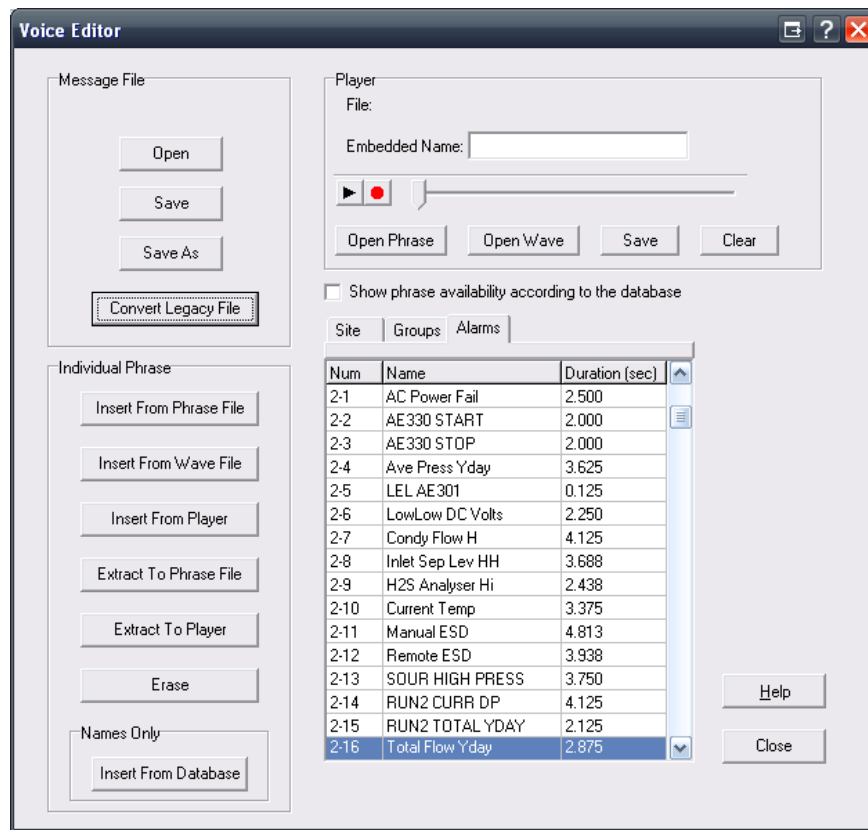


The name and duration of the voice is now displayed.

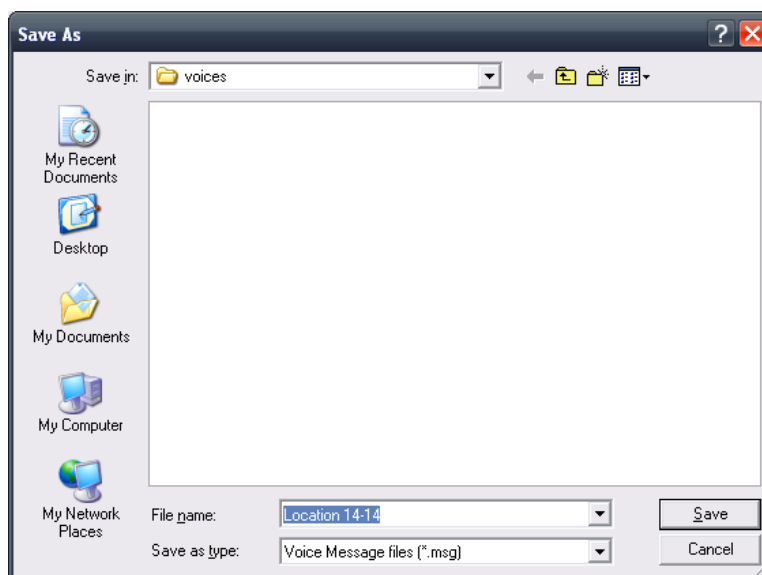
ProTalk Link

SPX/FLX Voice Conversion Tutorial

Select the 'Alarms' tab, scroll down to the first alarm block (2-1 if a P1 module is present) and repeat the process:



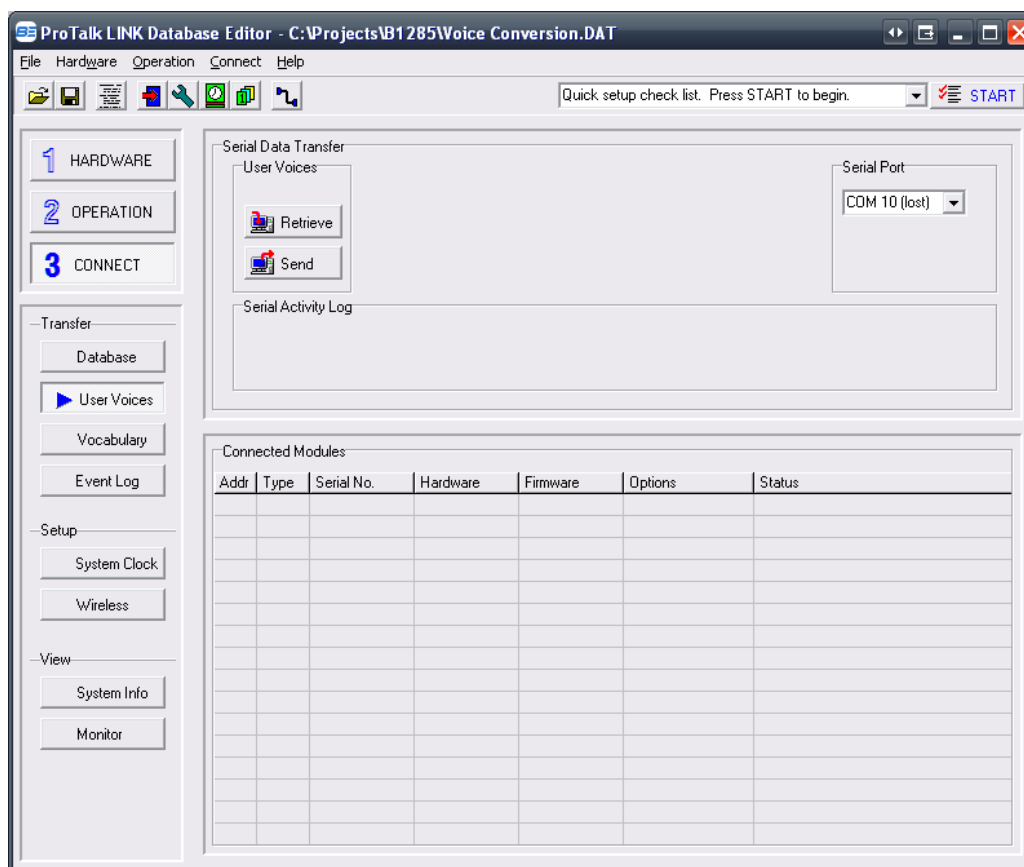
Once the files have been loaded, press the 'Save As' button to create the .msg file and save it to a suitable location:



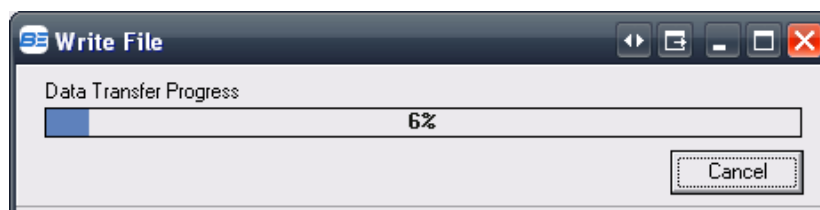
ProTalk Link

SPX/FLX Voice Conversion Tutorial

Close the Voice Editor, press the 'Connect' button and then the 'User Voices' button:



Press 'Send' near the top and select the .msg file that was just created:



Once the transfer window closes, the voices will be loaded into the Link.