

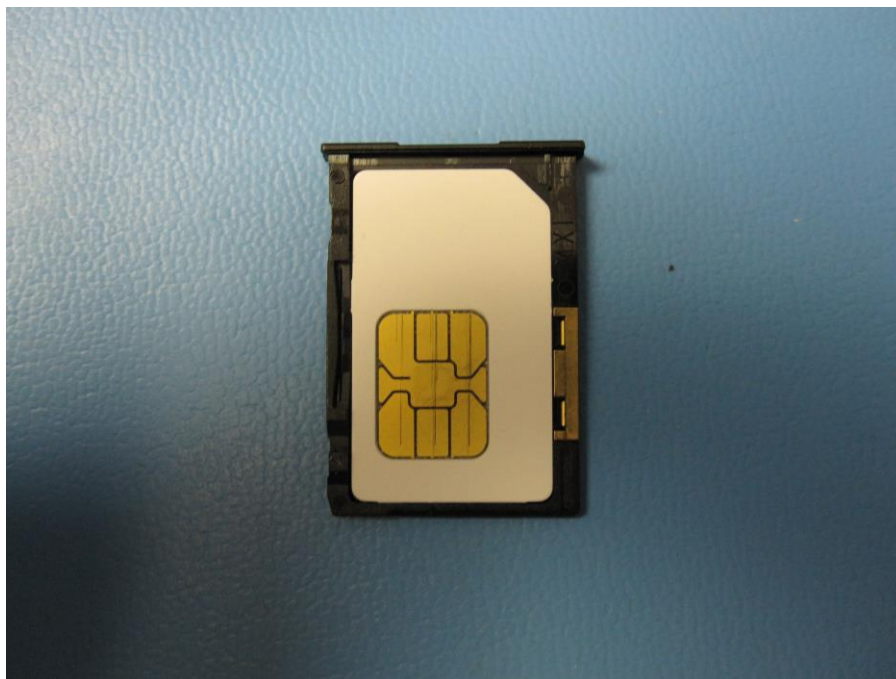
ProTalk LINK

W3 SIM Card Replacement Instructions

1) Eject the SIM card tray from the W3 module by pressing the yellow button on the front of the unit:



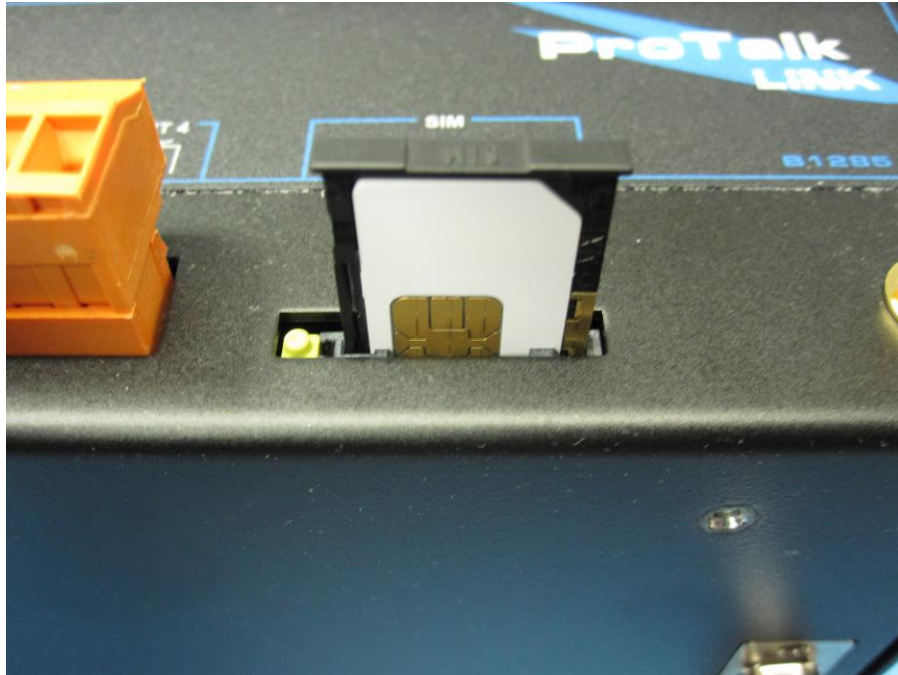
2) Remove the SIM card by pushing it out from the back of the holder with a narrow object. Insert the new card into the holder; making sure that it snaps into place.



ProTalk LINK

W3 SIM Card Replacement Instructions

3) Insert the tray back into the W3 module with the card facing downwards:



4) Apply power to the system and, using the configuration software, check to make sure that the MIN, ICCID and RSSI values are relevant. If the MIN number appears as ????????????, then the SIM card has not been activated:

